

Air Flow Control Valve

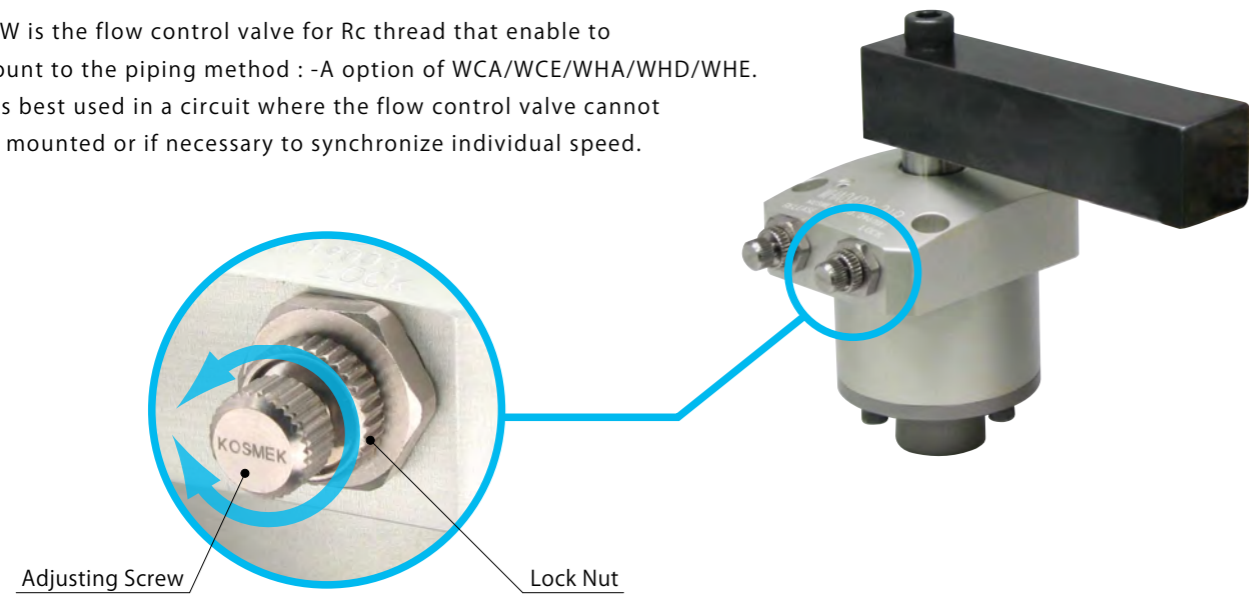
Model BZW



Directly mounted to clamps, easy adjusting

• Directly Mounted to Clamps

BZW is the flow control valve for Rc thread that enable to mount to the piping method : -A option of WCA/WCE/WHA/WHD/WHE. It is best used in a circuit where the flow control valve cannot be mounted or if necessary to synchronize individual speed.



Corresponding Product Model

Clamps	BZW Model No.	Clamp Model No.
High-Power Pneumatic Link Clamp	BZW0100-A	WCE□2-2A□
High-Power Pneumatic Swing Clamp	BZW0100-B	WHE□0-2A□
Pneumatic Swing Clamp		WHA□0-2A□
Double Piston Pneumatic Swing Clamp		WHD□0-2A□
Pneumatic Link Clamp		WCA□1-2A□

Corresponding to Piping Method -A option.

※ When mounting BZW to piping method G, take off R thread plug and remove the seal tape not to get inside cylinder.

Model No. Indication

BZW 010 0 - B

Control Method
B : Meter-out
A : Meter-in

Design No.
0 : Revision Number

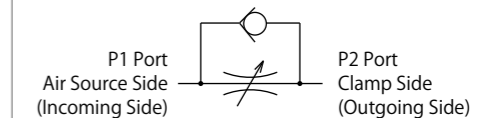
R Thread Size
010 : Rc1/8

Specifications

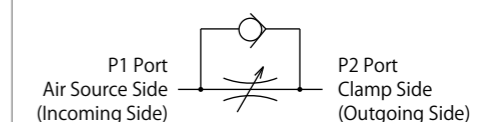
Model No.	BZW0100-B	BZW0100-A
Control Method	Meter-out	Meter-in
Operating Pressure MPa	0.1 ~ 1.0	
Withstanding Pressure MPa	1.5	
Adjust Screw Number of Rotations	10 Rotations	
Tightening Torque N·m	5 ~ 7	
Corresponding Model No.	WHE□0-2A□ WHA□0-2A□ WHD□0-2A□ WCA□1-2A□	WCE□2-2A□

Circuit Symbol

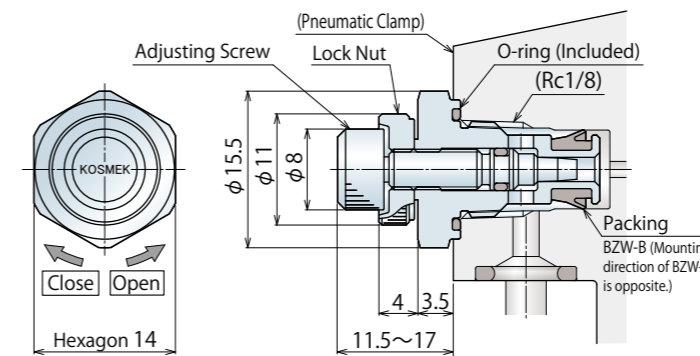
BZW0100-B : Meter-out



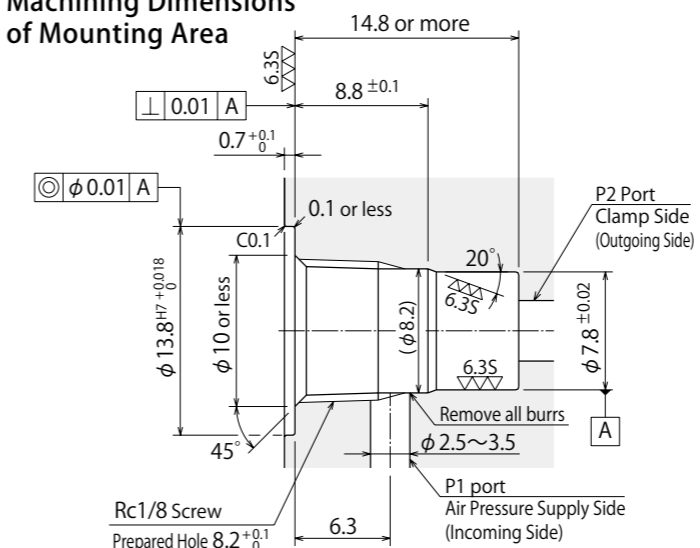
BZW0100-A : Meter-in



External Dimensions



Machining Dimensions of Mounting Area

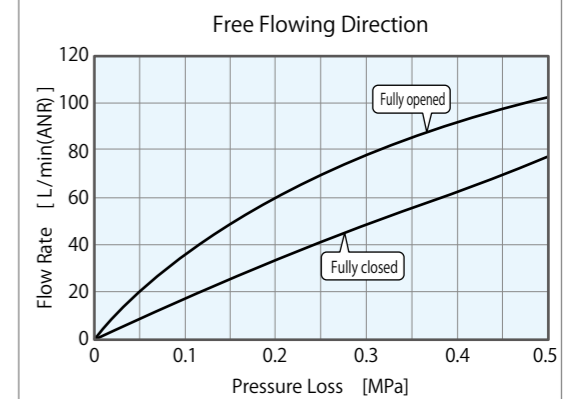
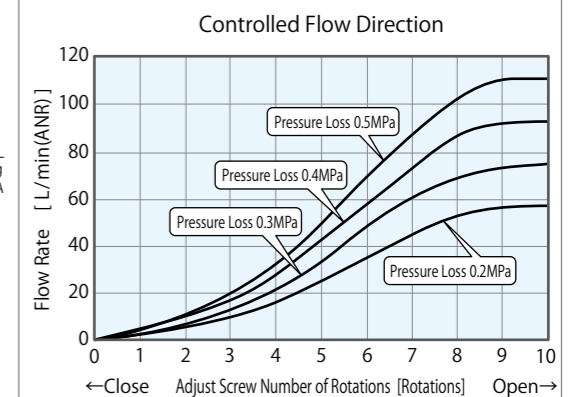


Notes :

- Since the ▽▽ area is sealing part, be careful not to damage it.
- No cutting chips or burr should be at the tolerance part of machining hole.
- As shown in the drawing, P1 port is used as the air supply side and P2 port as the clamp side.

Flow Rate Graph

BZW0100-B/BZW0100-A common



High-Power Series
Pneumatic Series
Hydraulic Series
Valve / Coupler Hydraulic Unit
Manual Operation Accessories
Cautions / Others

Pneumatic Hole Clamp SWA
Pneumatic Swing Clamp WHA
Double Piston Pneumatic Swing Clamp WHD
Pneumatic Link Clamp WCA

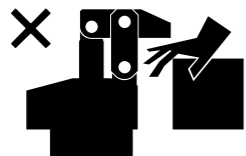
Air Flow Control Valve
BZW

Pneumatic Expansion Locating Pin VWM
VVK
Pneumatic Sensor Pin WWA

Cautions

● Notes on Handling

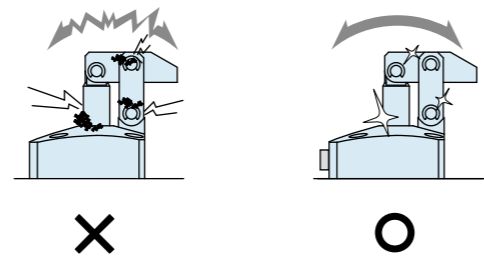
- 1) It should be handled by qualified personnel.
 - The hydraulic machine and air compressor should be handled and maintained by qualified personnel.
- 2) Do not handle or remove the machine unless the safety protocols are ensured.
 - ① The machine and equipment can only be inspected or prepared when it is confirmed that the preventive devices are in place.
 - ② Before the machine is removed, make sure that the above-mentioned safety measures are in place. Shut off the air of hydraulic source and make sure no pressure exists in the hydraulic and air circuit.
 - ③ After stopping the machine, do not remove until the temperature cools down.
 - ④ Make sure there is no abnormality in the bolts and respective parts before restarting the machine or equipment.
- 3) Do not touch clamp (cylinder) while clamp (cylinder) is working. Otherwise, your hands may be injured due to clinching.



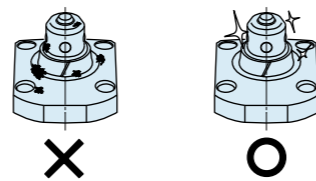
- 4) Do not disassemble or modify.
 - If the equipment is taken apart or modified, the warranty will be voided even within the warranty period.

● Maintenance and Inspection

- 1) Removal of the Machine and Shut-off of Pressure Source
 - Before the machine is removed, make sure that the above-mentioned safety measures are in place. Shut off the air of hydraulic source and make sure no pressure exists in the hydraulic and air circuit.
 - Make sure there is no abnormality in the bolts and respective parts before restarting.
- 2) Regularly clean the area around the piston rod and plunger.
 - If it is used when the surface is contaminated with dirt, it may lead to packing seal damage, malfunctioning, fluid leakage and air leaks.



- 3) Please clean out the reference surface regularly (taper reference surface and seating surface) of locating machine. (VS/VT/VFL/VFM/VFJ/VFK/WVS/VWM/VWK/VX/VXF)
 - Location products, except VX/VXF model, can remove contaminants with cleaning functions. When installing pallets make sure there is no thick sludge like substances on pallets.
 - Continuous use with dirt on components will lead to locating functions not work properly, leaking and malfunction.



- 4) If disconnecting by couplers on a regular basis, air bleeding should be carried out daily to avoid air mixed in the circuit.
- 5) Regularly tighten nuts, bolts, pins, cylinders and pipe line to ensure proper use.
- 6) Make sure the hydraulic fluid has not deteriorated.
- 7) Make sure there is smooth action and no abnormal noise.
 - Especially when it is restarted after left unused for a long period, make sure it can be operated correctly.
- 8) The products should be stored in the cool and dark place without direct sunshine or moisture.
- 9) Please contact us for overhaul and repair.

● Warranty

- 1) Warranty Period
 - The product warranty period is 18 months from shipment from our factory or 12 months from initial use, whichever is earlier.
- 2) Warranty Scope
 - If the product is damaged or malfunctions during the warranty period due to faulty design, materials or workmanship, we will replace or repair the defective part at our expense. Defects or failures caused by the following are not covered.
 - ① If the stipulated maintenance and inspection are not carried out.
 - ② If the product is used while it is not suitable for use based on the operator's judgment, resulting in defect.
 - ③ If it is used or handled in inappropriate way by the operator. (Including damage caused by the misconduct of the third party.)
 - ④ If the defect is caused by reasons other than our responsibility.
 - ⑤ If repair or modifications are carried out by anyone other than Kosmek, or without our approval and confirmation, it will void warranty.
 - ⑥ Other caused by natural disasters or calamities not attributable to our company.
 - ⑦ Parts or replacement expenses due to parts consumption and deterioration. (Such as rubber, plastic, seal material and some electric components.)

Damages excluding from direct result of a product defect shall be excluded from the warranty.

- High-Power Series
- Pneumatic Series
- Hydraulic Series
- Valve / Coupler Hydraulic Unit
- Manual Operation Accessories
- Cautions / Others

- Cautions
 - Installation Notes (For Hydraulic Series)
 - Hydraulic Fluid List
 - Notes on Hydraulic Cylinder Speed Control Circuit
 - Notes on Handling
 - Maintenance/Inspection
 - Warranty

- Company Profile
 - Company Profile
 - Our Products
 - History

- Index
 - Search by Alphabetical Order

- Sales Offices



WAHLTEC GmbH
 T: +49 (7584) 9238883
 F: +49 (7584) 9238887
 kosmek@wahltec.de
 www.wahltec.de