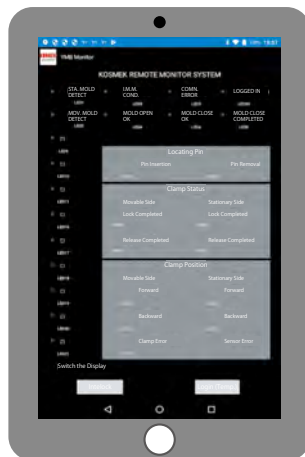


**New**

# For Mold Clamping System Remote Monitoring System

## Remote Monitoring of Mold Clamping System



# Remote Monitoring System

Wireless Model

Model YMB-W



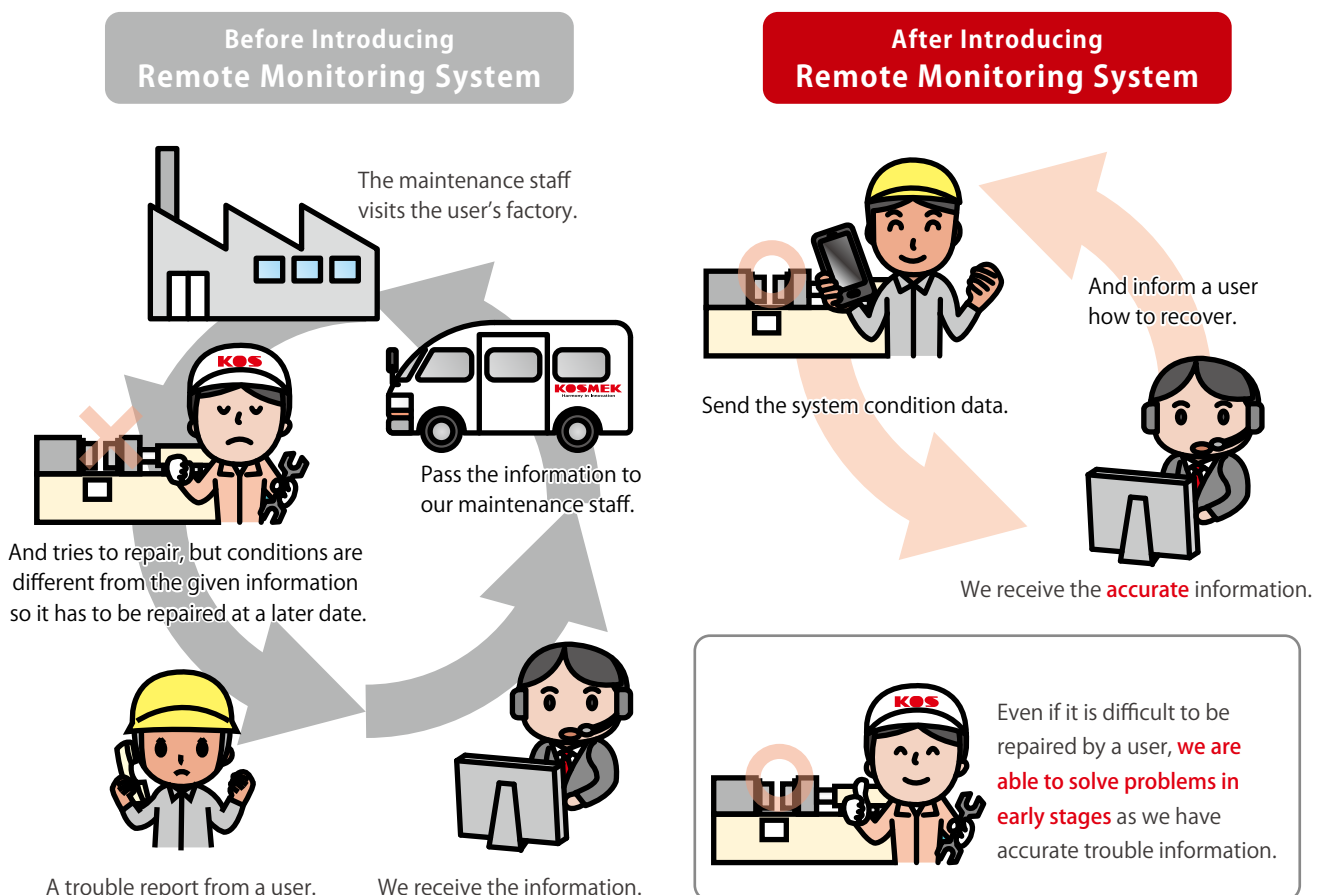
## Remotely Monitor Status of Mold Clamping System

Easy Setup, Provides Machine Condition and User Information Wirelessly  
Accurate data transmission enables quick machine recovery.

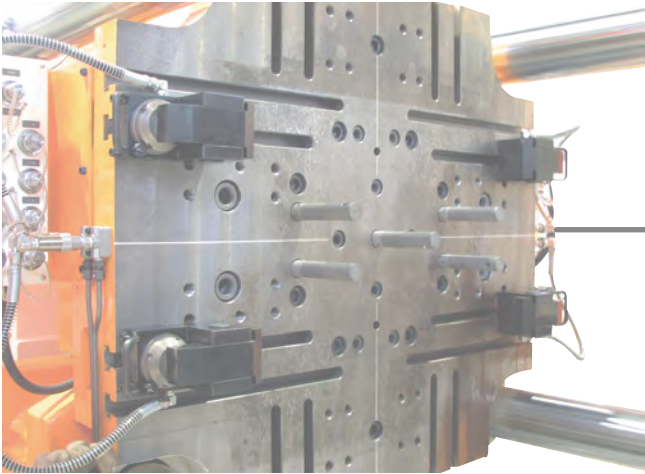
### Features

An error status during mold clamping can be fetched to a smart phone or tablet and the data will be sent to Kosmek via a user's communication network. This allows prompt and accurate condition information.

## Quick recovery from a system error improves service accuracy!



Image



Mold Clamping System

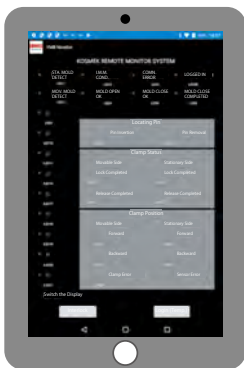
Operation Panel



Control Unit



Paring with Mold Clamping System to Confirm Conditions



WI-FI / 3G / 4G



Send the Information of  
Mold Clamping System to Kosmek

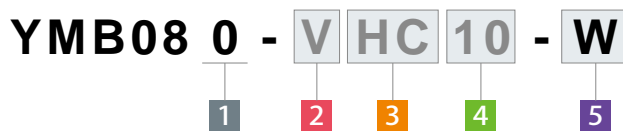


Check details.

And we will respond immediately.



● Model No. Indication



**1** Design No.

Revision Number

**2** Mold Change Method

- V** : Vertical Mold Change System (Horizontal Molding Machine)
- H** : Horizontal Mold Change System (Horizontal Molding Machine)
- R** : Vertical Molding Machine ※<sup>1</sup>

Notes :

- ※1. Please contact us for the control method of vertical molding machine.
- 1. Contact us for specifications and external dimensions of the options.

**3** Applicable Clamp Model No.

Refer to the following catalog for further information of each series.

- G series (Hydraulic Clamp)** : Refer to CAT. NO. GBB001-□□-GB
- H series (Pneumatic Clamp)** : Refer to CAT. NO. HZ-□□-GB
- Q series (Pneumatic Clamp)** : Refer to CAT. NO. QM-□□-GB

**4** Pressure Source ※ When using Air Valve Unit

- 10** : With Pressure Switch in the Clamp Circuit
- 00** : Without Pressure Switch in the Clamp Circuit

**5** Option

- Blank** : Standard (Operation Panel in Japanese)
- E** : With Mold Confirmation Proximity Switch
- H** : With Mold Confirmation Proximity Switch (6-8 pcs. on each side)
- N** : Operation Panel in English
- C** : Operation Panel in Chinese

**W** : With Remote Monitoring Function (Wireless Model) ※<sup>2</sup>

New

Note :

- ※2. A terminal device such as tablet or smart phone is not included. It should be prepared by customer.

● Reference Catalog List

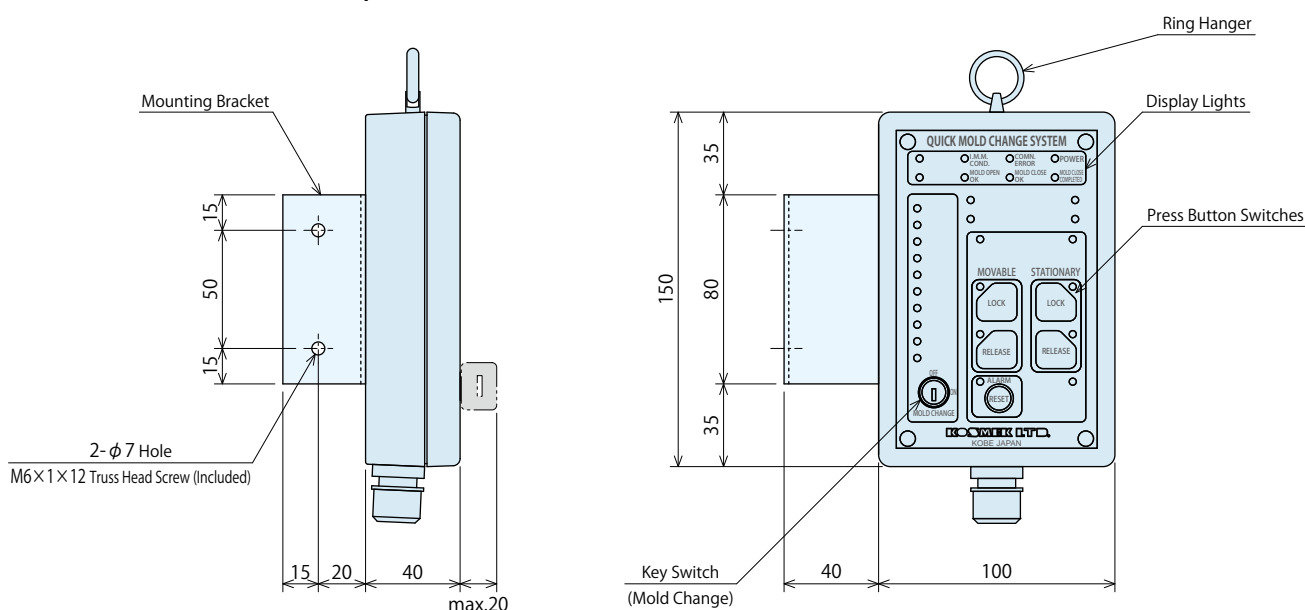
Catalog Name	Catalog Number
G series (Hydraulic Clamp)	GBB001-□□-GB
H series (Pneumatic Clamp)	HZ-□□-GB
Q series (Pneumatic Clamp)	QM-□□-GB

Refer to each series' catalog for specifications, dimensions and details not related to **5** Option **W** : With Remote Monitoring Function (Wireless Model).

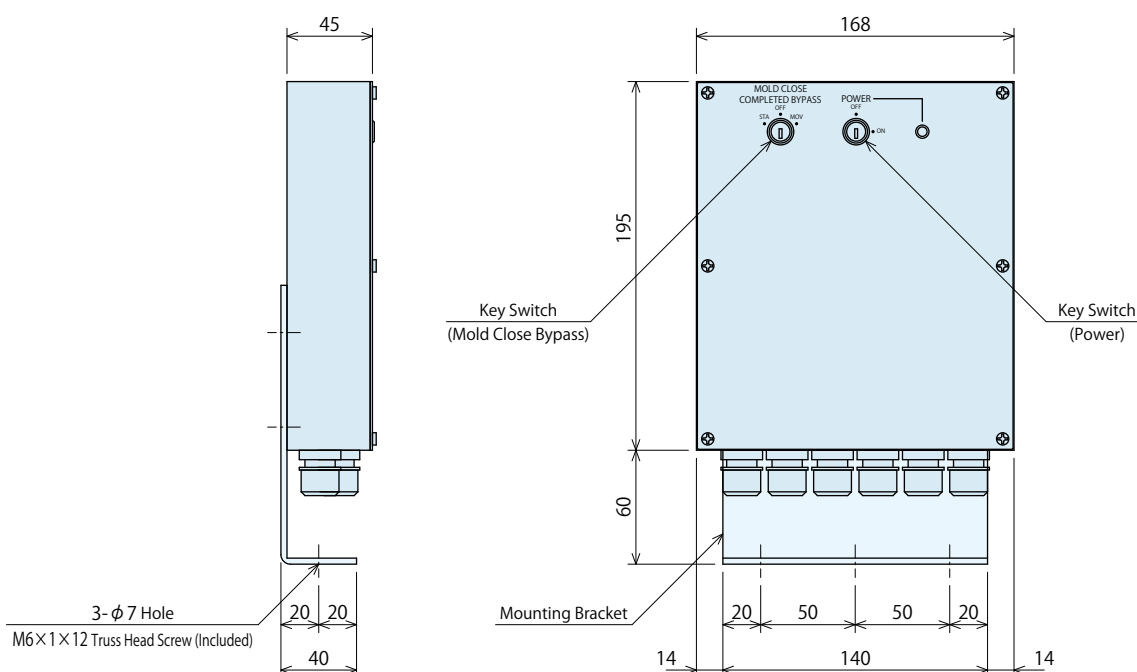
● Specifications : Bluetooth

Communication Method (Profile)	Bluetooth Standard ver. 4.1 (Bluetooth Low Energy)
Output	Bluetooth Standard Power Class 2 (TX power +4dBm)
Communication Distance Range	Line-of-Sight Range within about 2.5m ~ 10m
Frequency Band	2.4GHz Band (2.402GHz - 2.480GHz)
Modulation System	GFSK
Applicable Bluetooth Protocol	GAP / GATT / SM / LL / RF-PHY
Mobile Operating System	iOS 10.3.3 or later version / Android 6.0 or later version
Certification	CE Marking <b>[EU]</b>
	FCC <b>[North America]</b>
	Technical Regulations Conformity Certification / Construction Type Certification (Prev. TELEC) <b>[Japan]</b>

● External Dimensions : Operation Panel



● External Dimensions : Control Unit



Notes :

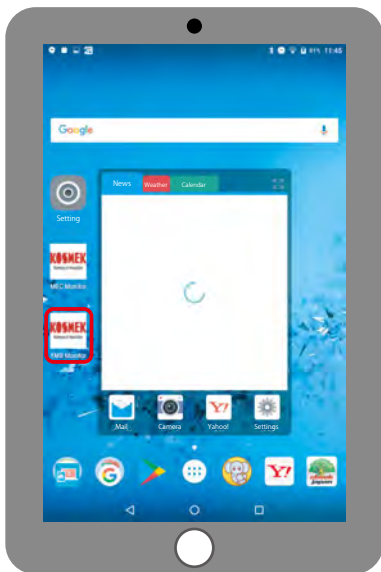
1. The bracket can be mounted in any direction.
2. The bracket is shipped mounted as shown in the drawings above.

● Operation Outline : Initial Setup ~ Login Refer to the instruction manual for further information.

User-Friendly Application Enables Quick and Simple Initial Setup • User Registration

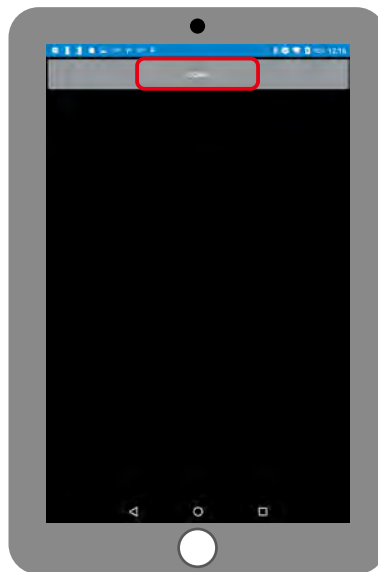
Activate the Application

Download the Remote Monitoring System Application



Find the Bluetooth

Tap [scan] to find the Bluetooth.



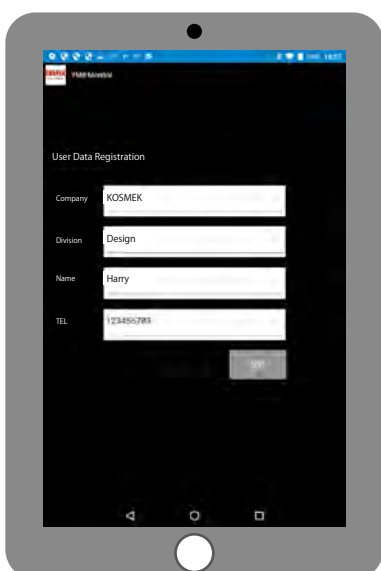
Pair with the Bluetooth

Tap [KOSMEK-YMB2] on the pairing list to pair with your device.



User Data Registration

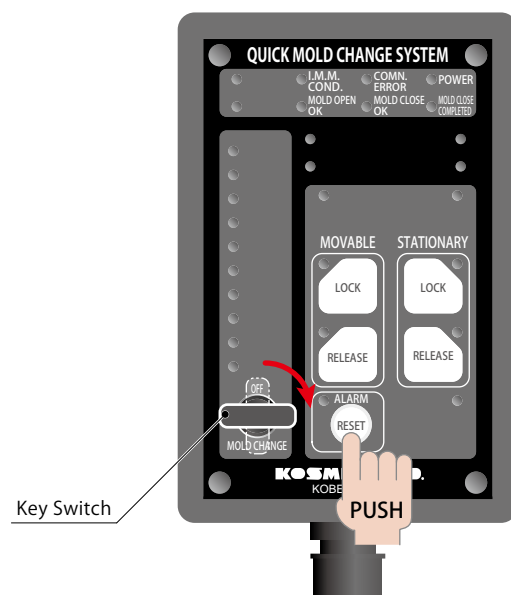
Enter user's information to register.



Operation Method of YMB Operation Panel

Operate YMB Operation Panel to Log In

- Turn the key switch "MOLD CHANGE" ON while pressing "RESET".

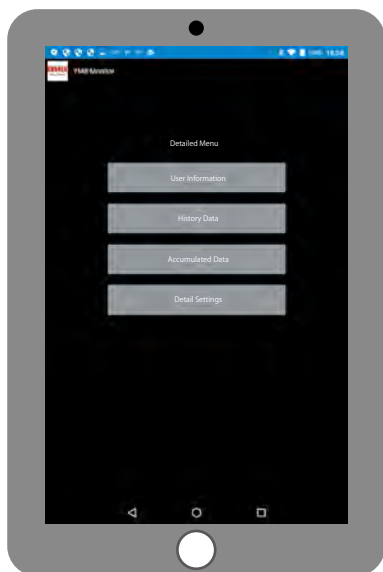


● **Operation Outline : Display ~ Send Status** Refer to the instruction manual for further information.

**Quick Recovery of Mold Clamping System Possible  
by sending accurate data to us while checking its status.**

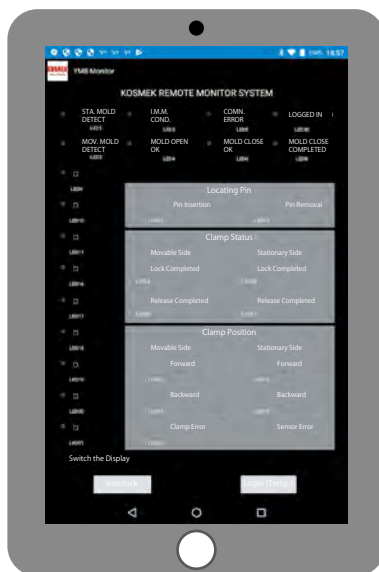
**Detailed Menu**

Select an item on the detailed menu you would like to check.



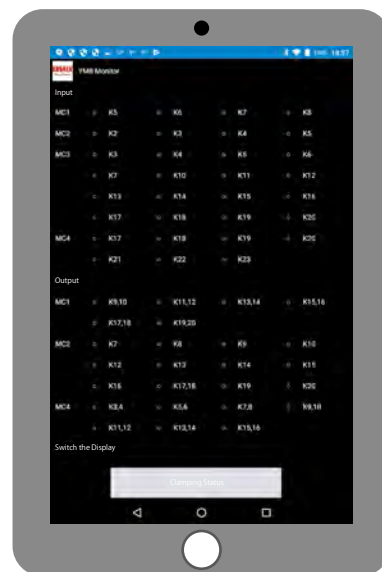
**Clamping Status**

Displays the same item as Operation Panel.



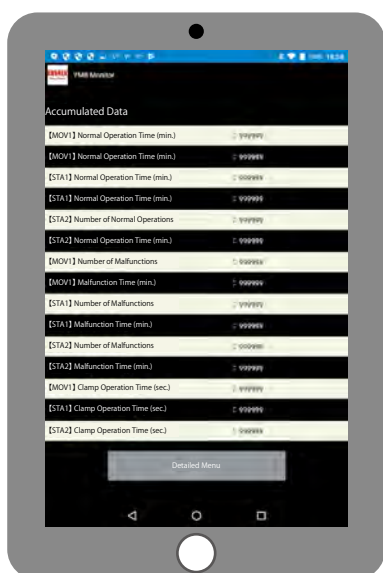
**Input and Output Signal**

Displaying I/O status enables to find errors immediately.



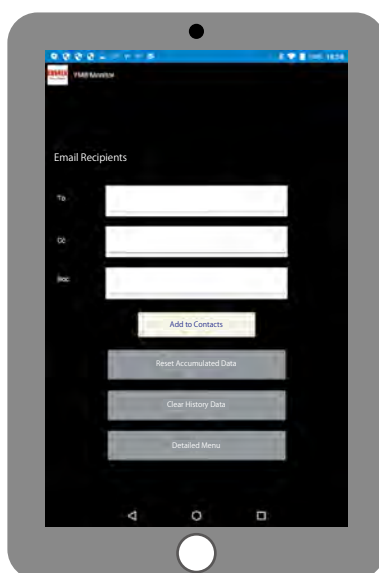
**Operation History**

Displays the operation history of clamping system.



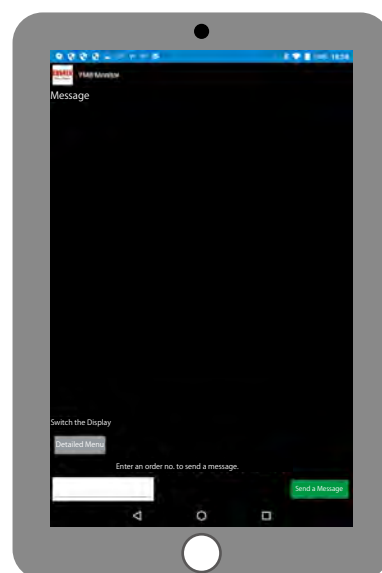
**Email Recipients**

Able to enter and record email recipients.



**Sending Messages**

Able to enter comments and send them to us.





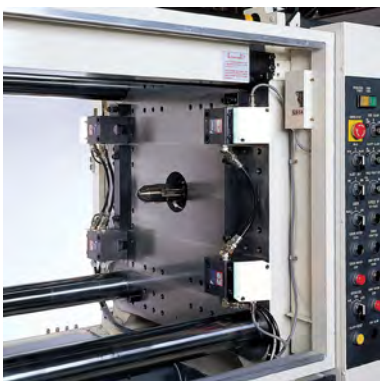
● Magnet Clamp System

The world's thinnest (37mm) magnet plate ensures safety and securely clamps the mold.



● Pneumatic Clamp System

Eco-friendly air operated clamps exert powerful clamping force and are equipped with a mechanical locking system. New 40ton / 50ton models have been introduced for extra-large injection molding machines.



● Hydraulic Clamp System

Hydraulic clamps have powerful clamping force in a compact body. Kosmek also offers units that generate hydraulic pressure using only factory air.

**KOSMEK**  
Harmony in Innovation

- HEAD OFFICE 1-5, 2-Chome, Murotani, Nishi-ku, Kobe 651-2241  
TEL.+81-78-991-5162 FAX.+81-78-991-8787
- BRANCH OFFICE (U.S.A.) KOSMEK (U.S.A.) LTD.  
650 Springer Drive, Lombard, IL 60148 USA  
TEL. +1-630-620-7650 FAX. +1-630-620-9015
- MEXICO REPRESENTATIVE OFFICE KOSMEK USA Mexico Office  
Blvd Jurica la Campana 1040, B Colonia Punta Juriquilla Queretaro, QRO 76230 Mexico  
TEL.+52-442-161-2347
- BRANCH OFFICE (EUROPE) KOSMEK EUROPE GmbH  
Schleppeplatz 2 9020 Klagenfurt am Wörthersee Austria  
TEL.+43-463-287587 FAX.+43-463-287587-20
- BRANCH OFFICE (INDIA) KOSMEK LTD - INDIA  
F 203, Level-2, First Floor, Prestige Center Point,  
Cunningham Road, Bangalore -560052 India  
TEL.+91-9880561695
- THAILAND REPRESENTATIVE OFFICE 67 Soi 58, RAMA 9 Rd., Suanluang, Suanluang, Bangkok 10250  
TEL. +66-2-300-5132 FAX. +66-2-300-5133

- FOR FURTHER INFORMATION ON UNLISTED SPECIFICATIONS AND SIZES, PLEASE CALL US.
- SPECIFICATIONS IN THIS LEAFLET ARE SUBJECT TO CHANGE WITHOUT NOTICE.



<http://www.kosmek.com>



WAHLTEC GmbH  
Ravensburger Str. 14  
88361 Altshausen  
T: +49 (7584) 9238883  
F: +49 (7584) 9238887

[www.wahltec.de](http://www.wahltec.de)