

New

Auto Coupler



Model JVA0100/JVB0100



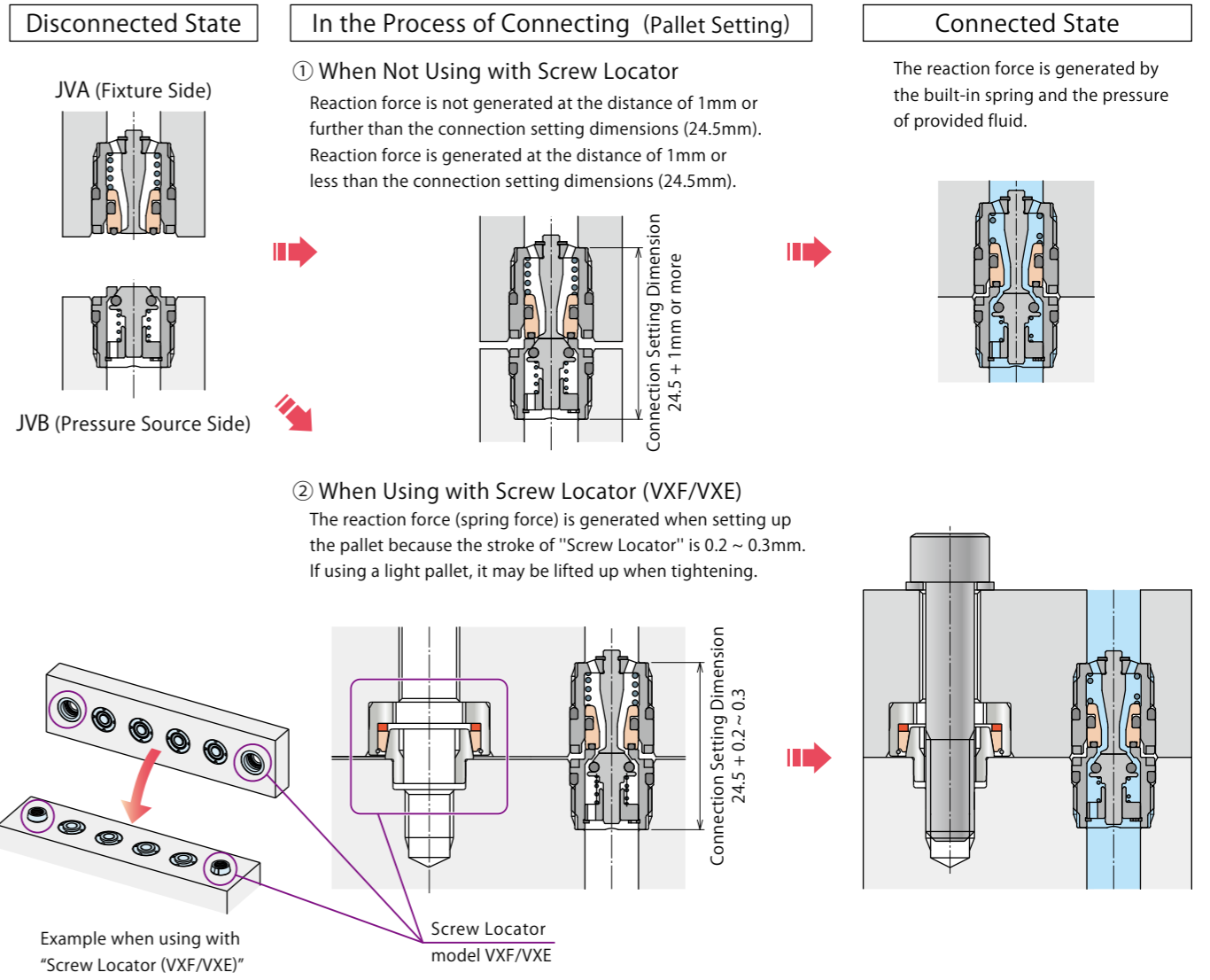
※ This is a full-scale photo.

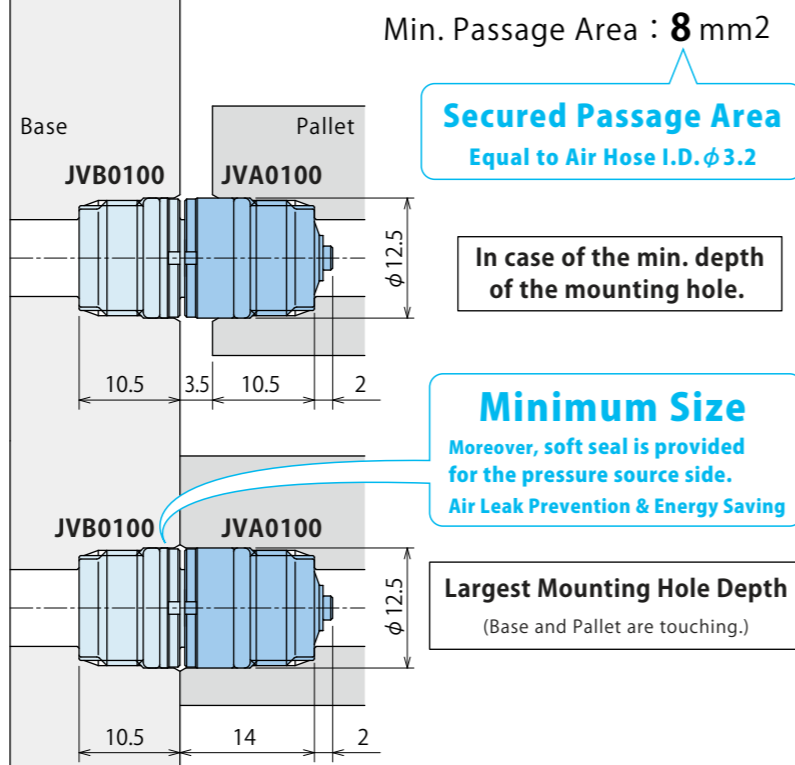
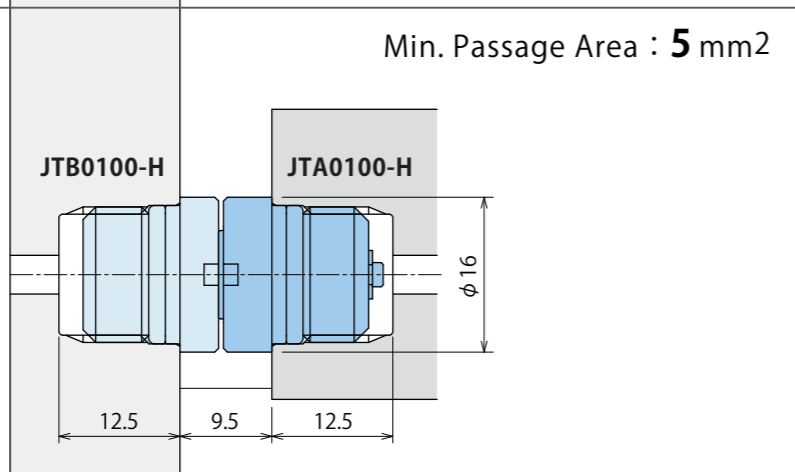
Auto Coupler Compact for Air / Vacuum

model **JVA0100/JVB0100**

The new auto coupler is **designed to be as compact as possible**, and maximizes passage area. Applicable to air (positive pressure) and vacuum (negative pressure). The body is made of 100% stainless steel, and the seals are made of fluorine rubber. Connection stroke is 1mm, and it is easily used with Screw Locator (model VXE/VXF) for quick change.

Action Description



Model No.	Pressure Range	Usable Fluid	Comparison of Auto Coupler Connected Dimensions
NEW Model JVA0100/JVB0100	1MPa or less	Vacuum Air	Min. Passage Area : 8 mm² 
			Min. Passage Area : 5 mm² 

Model No. Indication

JV B 010 0 - H

1 2 3

1 Style

- A** : O-ring side of Connection Surface (Outgoing Side / Fixture Side)
- B** : Metal Side of Connection Surface (Incoming Side / Pressure Source Side)

2 Design No.

0 : Revision Number

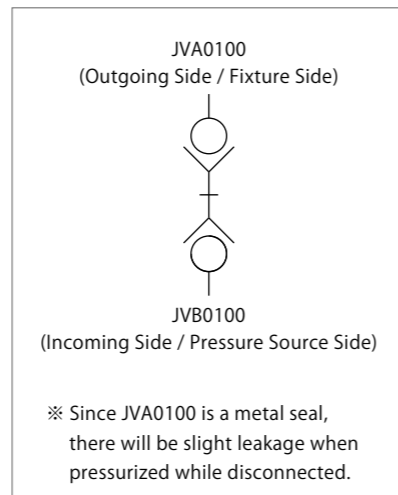
3 Material

H : Stainless Steel, Fluor Rubber

Specifications

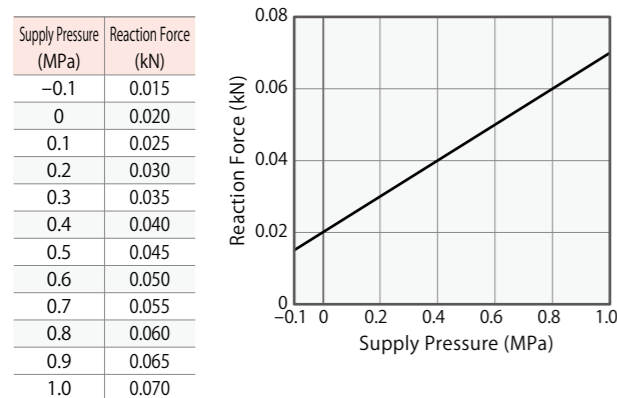
Model No.	Fixture Side		JVA0100-H
	Pressure Source Side		JVB0100-H
Max. Operating Pressure	MPa		1.0
Withstanding Pressure	MPa		1.5
Min. Passage Area	mm ²		8
Offset Distance (Tolerance)	mm		±0.5
Angular Deviation (Tolerance)	DEG.		0.3
Operating Temperature	°C		0 ~ 120
Usable Fluid			Air or Vacuum
Reaction Force	Operating Pressure	at 0.5 MPa	0.045
		at P MPa	0.050 × P + 0.02
Weight	g	JVA0100	8
		JVB0100	6

Circuit Symbol



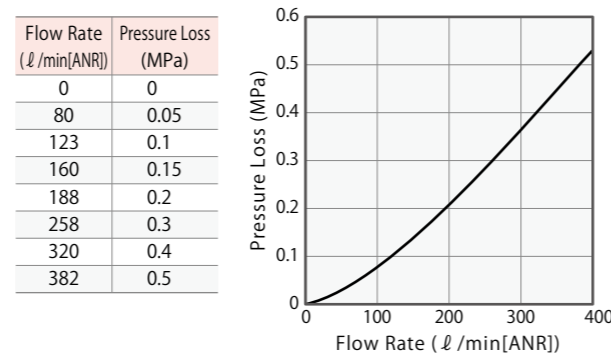
Supply Pressure—Reaction Force Graph

The graph shows the reaction force when supplying pressure after the connection of JVA0100/JVB0100 is completed.

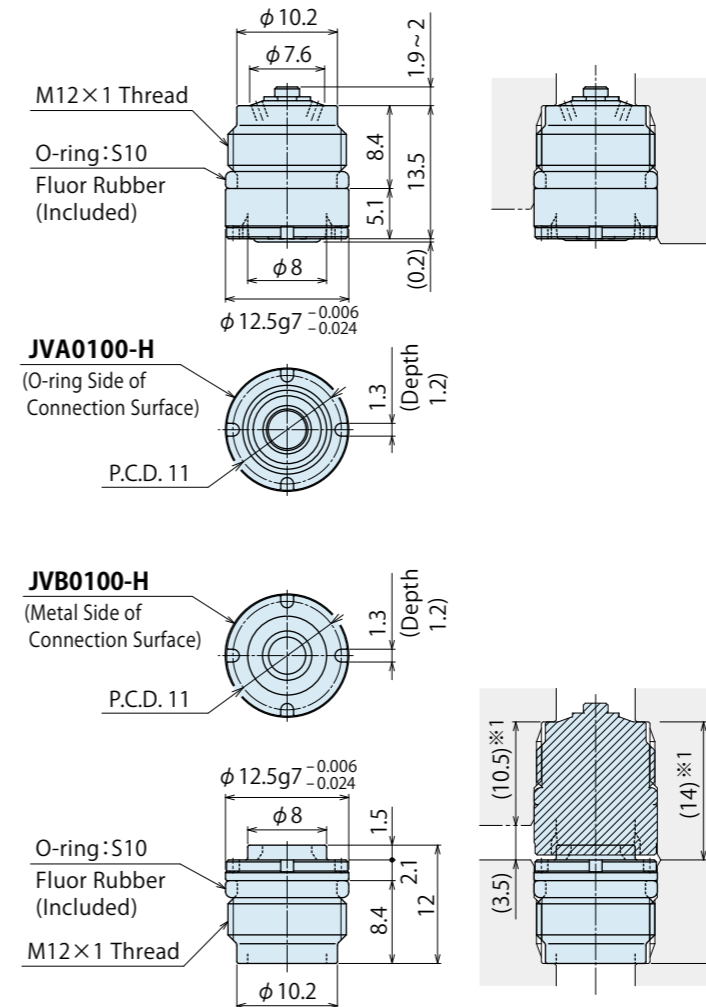


Flow Rate—Pressure Loss Characteristic Graph

The fluid used on this data is air.



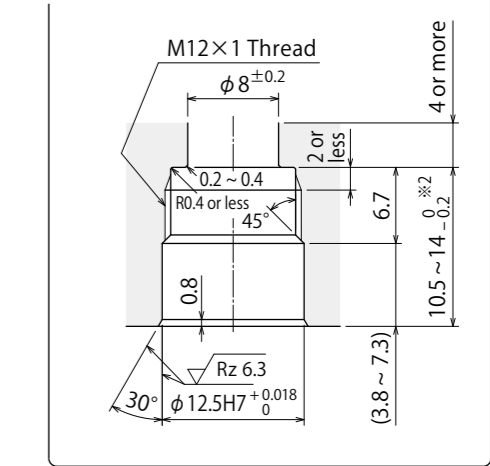
External Dimensions (JVA0100-H / JVB0100-H)



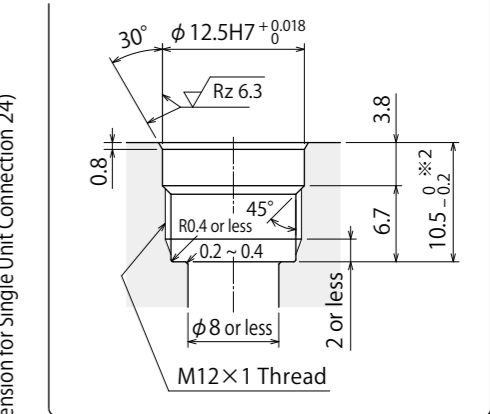
Notes:

- When ※1 dimension is 14 mm, clearance between base plate and pallet is 0 mm. When ※1 dimension is 10.5 mm, clearance between base plate and pallet is 3.5 mm.
- For the tolerance of ※2, when using with the pallet clamp (Lift-Up Stroke 1mm) and it is required to prevent the force of spring in JVA_JVB, the tolerance of each machining depth should be ±0.05mm. (Connection Setting Dimension: 24.5 ± 0.10mm)
- Mounting Jig (Model ZZJ0060) or equivalent is required to install and remove JVA0100/JVB0100. Mounting Jig (Model ZZJ0060) is not included with JVA0100/JVB0100. Please order separately.

Machining Dimensions for Mounting Hole (JVA0100-H)



Machining Dimensions for Mounting Hole (JVB0100-H)



Model No.	Thread Size	Tightening Torque (N·m)
JVA0100-H JVB0100-H	M12×1	0.8

Accessory : Mounting Jig

This jig is used to mount and remove the JVA0100/JVB0100.
Tightening Torque: 0.8 N·m

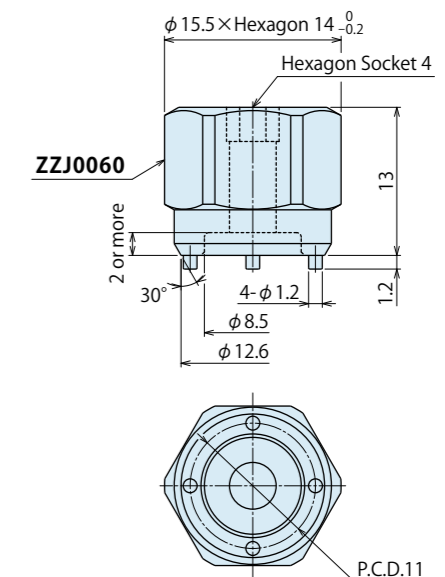
Model No. Indication

ZZJ0060

Design No. (Revision Number)

Note:

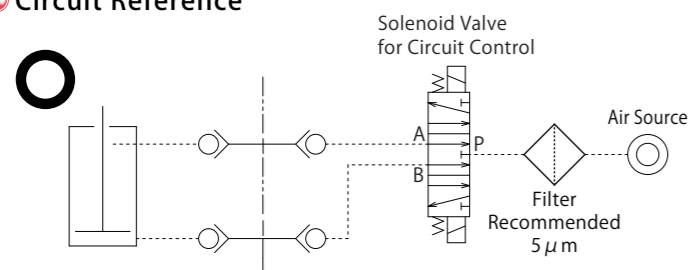
- This mounting jig (Model ZZJ0060) or equivalent is required to install and remove JVA0100/JVB0100. Please determine the required number of jigs when ordering.



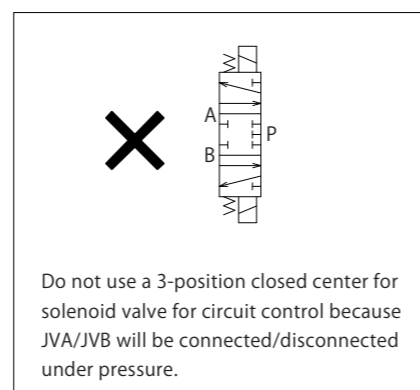
Notes for Usage (JVA0100/JVB0100)

1. Do not connect or disconnect the auto coupler under pressure. (Refer to the following Circuit Reference.)
2. Do not connect the coupler when contaminants are adhered on each connecting surface.
When there are cutting chips or coolant, install a cover, or remove all contaminants with air blow.
3. Exceeding allowable offset leads to damage on internal parts. It is recommended to install a guide pin, etc.
4. When pressing up to the connection limit, the force should be higher than the reaction force and lower than 0.25 kN.
5. For mounting and removing the coupler, use the mounting jig ZZJ0060 or equivalent.

Circuit Reference



Use a 3-position exhaust center solenoid valve for circuit control, and stop providing air pressure with the center position when connecting/disconnecting JVA/JVB.



Cautions

Installation Notes

- 1) Check the Usable Fluid
 - Please supply filtered clean dry air.
 - Oil supply with a lubricator, etc. is unnecessary.
- 2) Preparation before Piping
 - The pipeline, piping connector and fixture fluid passage should be cleaned by thorough flushing.
The dust and cutting chips in the circuit may lead to air leakage and malfunction.
 - There is no filter provided with this product for prevention of contaminants in the air circuit.
- 3) Applying Sealing Tape
 - Wrap with tape 1 to 2 times following the screw direction.
 - Pieces of sealing tape can lead to air leakage and malfunction.
 - Please implement piping construction in a clear environment to prevent anything getting in products.

Maintenance and Inspection

- 1) Removal of the Product and Shut-off of Pressure Source
 - Before the product is removed, make sure that safety devices and preventive devices are in place. Shut off the pressure and power source, and make sure no pressure exists in the air circuit.
 - Make sure there is no trouble/issue in the bolts and respective parts before restarting.
- 2) Regularly tighten pipes, mounting bolts and others to ensure proper use.
- 3) Make sure there is a smooth action without an irregular noise.
 - Especially when it is restarted after left unused for a long period, make sure it can be operated correctly.
- 4) The product should be stored in the cool and dark place without direct sunshine or moisture.
- 5) Please contact us for overhaul and repair.

Notes on Handling

- 1) It should be operated by qualified personnel.
 - The hydraulic machine and air compressor should be operated and maintained by qualified personnel.
- 2) Do not operate or remove the product unless the safety protocols are ensured.
 - ① The machine and equipment can only be inspected or prepared when it is confirmed that the safety devices are in place.
 - ② Before the product is removed, make sure that the above-mentioned safety devices are in place. Shut off the pressure and power source, and make sure no pressure exists in the air and hydraulic circuits.
 - ③ After stopping the product, do not remove until the temperature drops.
 - ④ Make sure there is no abnormality in the bolts and respective parts before restarting the machine or equipment.
- 3) Do not disassemble or modify.
 - If the equipment is taken apart or modified, the warranty will be voided even within the warranty period.

Warranty

- 1) Warranty Period
 - The product warranty period is 18 months from shipment from our factory or 12 months from initial use, whichever is earlier.
- 2) Warranty Scope
 - If the product is damaged or malfunctions during the warranty period due to faulty design, materials or workmanship, we will replace or repair the defective part at our expense. Defects or failures caused by the following are not covered.
 - ① If the stipulated maintenance and inspection are not carried out.
 - ② If the product is used while it is not suitable for use based on the operator's judgment, resulting in defect.
 - ③ If it is used or operated in an inappropriate way by the operator. (Including damage caused by the misconduct of the third party.)
 - ④ If the defect is caused by reasons other than our responsibility.
 - ⑤ If repair or modifications are carried out by anyone other than Kosmek, or without our approval and confirmation, it will void warranty.
 - ⑥ Others caused by natural disasters or calamities not attributable to our company.
 - ⑦ Parts or replacement expenses due to parts consumption and deterioration. (Such as rubber, plastic, seal material and some electric components.)

Damages excluding from direct result of a product defect shall be excluded from the warranty.



KOSMEK LTD.

▶ <http://www.kosmek.com/>

HEAD OFFICE 1-5, 2-chome, Murotani, Nishi-ku, Kobe-city, Hyogo, Japan 651-2241
TEL.+81-78-991-5162 FAX.+81-78-991-8787

United States of America SUBSIDIARY	KOSMEK (USA) LTD. 650 Springer Drive, Lombard, IL 60148 USA TEL. +1-630-620-7650 FAX. +1-630-620-9015
MEXICO REPRESENTATIVE OFFICE	KOSMEK USA Mexico Office Av. Santa Fe 103, Int. 59, col. Santa Fe Juriquilla, Queretaro, QRO, 76230, Mexico TEL. +52-1-55-3044-9983
EUROPE SUBSIDIARY	KOSMEK EUROPE GmbH Schleppeplatz 2 9020 Klagenfurt am Wörthersee Austria TEL. +43-463-287587 FAX. +43-463-287587-20
CHINA SUBSIDIARY	KOSMEK (CHINA) LTD. Room601, RIVERSIDE PYRAMID No.55, Lane21, Pusan Rd, Pudong Shanghai 200125, China TEL. +86-21-54253000
INDIA BRANCH OFFICE	KOSMEK LTD. - INDIA 4A/Old No:649, Ground Floor, 4th D cross, MM Layout, Kavalbyrasandra, RT Nagar, Bangalore -560032 India TEL.+91-9880561695
THAILAND REPRESENTATIVE OFFICE	KOSMEK Thailand Representation Office 67 Soi 58, RAMA 9 Rd., Phatthanakan, Suanluang, Bangkok 10250, Thailand TEL. +66-2-300-5132 FAX. +66-2-300-5133



WAHLTEC GmbH
T: +49 (7584) 9238883
F: +49 (7584) 9238887
kosmek@wahltec.de
www.wahltec.de

- For Further Information on Unlisted Specifications and Sizes, Please call us.
- Specifications in this Leaflet are Subject to Change without Notice.



JQA-QMA10823
KOSMEK HEAD OFFICE