

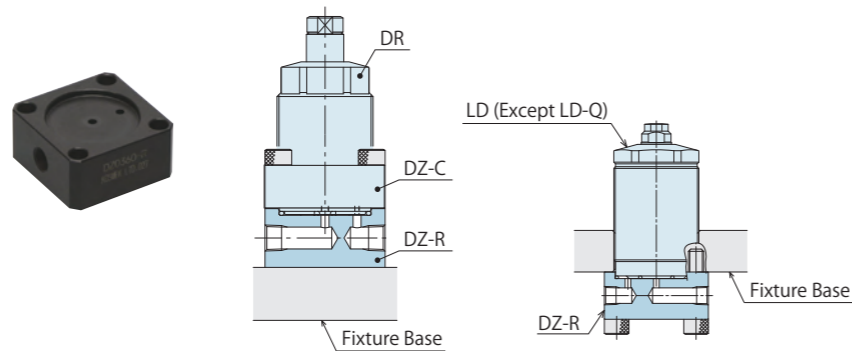
# Manifold Block / Nut

- Model **DZ-R**
- Model **DZ-C**
- Model **DZ-P**
- Model **DZ-B**
- Model **LZ-S**
- Model **LZ-SQ**
- Model **WNZ-SQ**
- Model **TNZ-S**
- Model **TNZ-SQ**

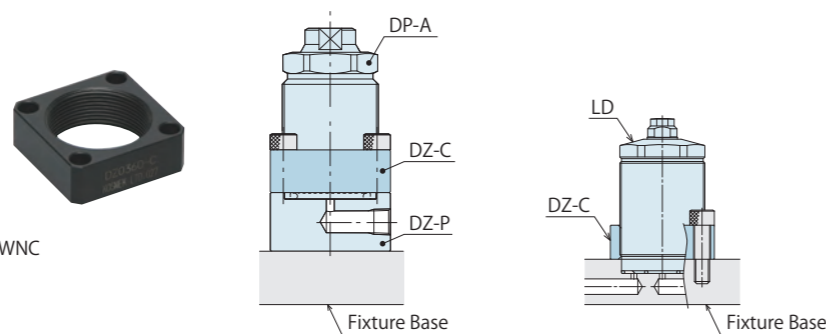


## Applicable Model/Application Examples

Model **DZ-R**  
Manifold Block for  
DR/LD/WNC  
Corresponding Model: DR / LD / WNC

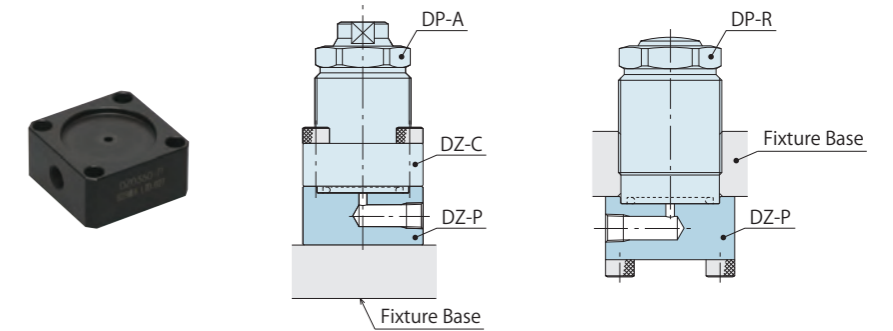


Model **DZ-C**  
Flanged Nut for  
DP/DR/DS/DT/LD/WNC  
Corresponding Model: DP / DR / DS / DT / LD / WNC

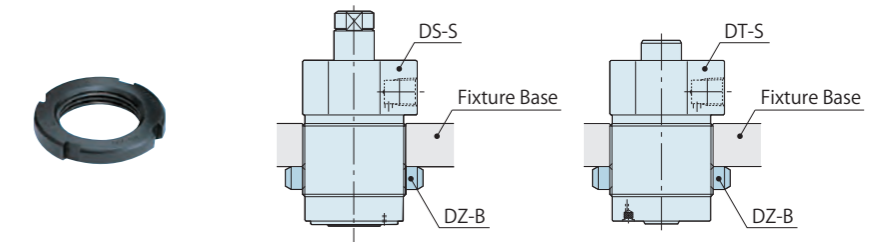


## Applicable Model/Application Examples

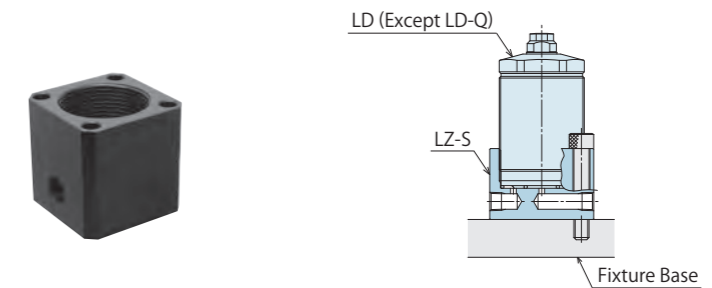
Model **DZ-P**  
Manifold Block for DP  
Corresponding Model: DP



Model **DZ-B**  
Bulkhead Nut for  
DP/DR/DS/DT  
Corresponding Model: DP / DR / DS / DT



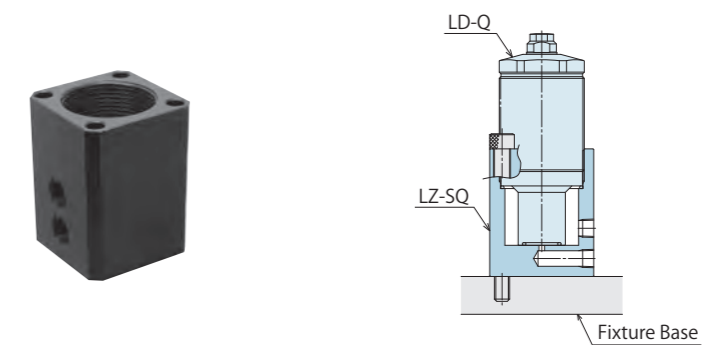
Model **LZ-S**  
Manifold Block for LD/WNC  
Corresponding Model: LD / WNC



Model **TNZ-S**  
Manifold Block for TNC  
Corresponding Model: TNC



Model **LZ-SQ**  
Manifold Block for LD-Q  
Corresponding Model: LD-Q



Model **WNZ-SQ**  
Manifold Block for WNC-Q  
Corresponding Model: WNC-Q



Model **TNZ-SQ**  
Manifold Block for TNC-Q  
Corresponding Model: TNC-Q

- High-Power Series
- Pneumatic Series
- Hydraulic Series
- Valve / Coupler Hydraulic Unit
- Manual Operation Accessories
- Cautions / Others

- Screw Locator
- VXF/VXE
- Manual Expansion Locating Pin
- VX

- Manifold Block
- WHZ-MD
- LZY-MD
- LZ-MS
- LZ-MP
- TMZ-1MB
- TMZ-2MB
- DZ-M

- Manifold Block / Nut
- DZ-R
- DZ-C
- DZ-P
- DZ-B
- LZ-S
- LZ-SQ
- WNZ-SQ
- TNZ-S
- TNZ-SQ

- Pressure Switch
- JBA

- Pressure Gauge
- JGA/JGB

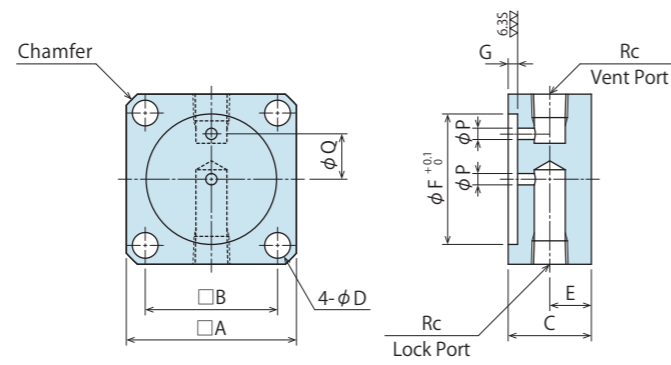
- Manifold
- JX

- Coupler Switch
- PS

- G-Thread Fitting

Manifold Block for DR/LD/WNC

Model No. Indication  
**DZ 036 0 - R**  
Size (Refer to following table)  
Design No. (Revision Number)

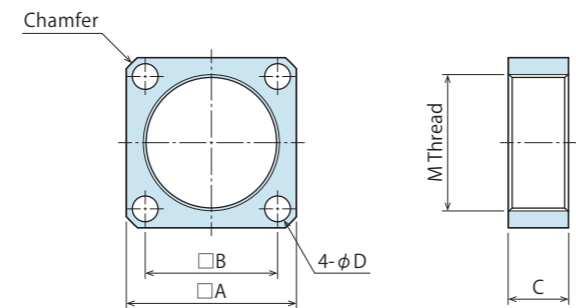


Model No.	DZ0220-R	DZ0240-R	DZ0260-R	DZ0300-R	DZ0360-R	DZ0450-R	DZ0550-R	DZ0600-R	DZ0650-R	DZ0800-R
Corresponding Model No.	DR0221 LD0222*1 WNC0350	DR0241 -	- LD0262*1 WNC0600	DR0301 LD0302*1 WNC1000	DR0361 LD0362*1 WNC1600	DR0451 LD0452*1 WNC3000	DR0551 -	- -	DR0651 -	DR0801 -
A	28	32	35	38	45	55	70	75	80	90
B	21	23	26	29	35	42	54	59	62	72
C	19	19	19	22	22	25	25	25	25	28
D	4.5	5.5	5.5	5.5	6.8	9	11	11	14	14
E	9.5	9.5	9.5	11	11	12.5	12.5	12.5	12.5	14
F	20.5	22.5	24.5	28.5	34.5	43.5	53	58	63	78
G	2.5	2.5	2.5	2.5	2.5	3.5	3.5	3.5	3.5	4
P	2	3	2.5	3	3	5	5	5	5	5
Q	7	7.5	9.5	10	12.5	15	19	24	24	30
Rc	Rc1/8	Rc1/8	Rc1/8	Rc1/8	Rc1/8	Rc1/4	Rc1/4	Rc1/4	Rc1/4	Rc1/4
Chamfer	C2	C3	C3	C3	C3	C4	C5	C4	C5.5	C5.5
Weight kg	0.1	0.2	0.2	0.2	0.3	0.6	0.8	0.9	1.0	1.5

Notes: 1. Material: S45C Surface Finishing: Alkaline Blackening  
2. Mounting bolts are not provided. Prepare mounting bolts according to the mounting height using the dimension C as a reference.  
\*1. It is not applicable for LD-Q: Work Support Hydraulic Advance Long Stroke Option. (Please select from LZ-SQ.)

Flange Nut for DP/DR/DS/DT/LD/WNC

Model No. Indication  
**DZ 036 0 - C**  
Size (Refer to following table)  
Design No. (Revision Number)

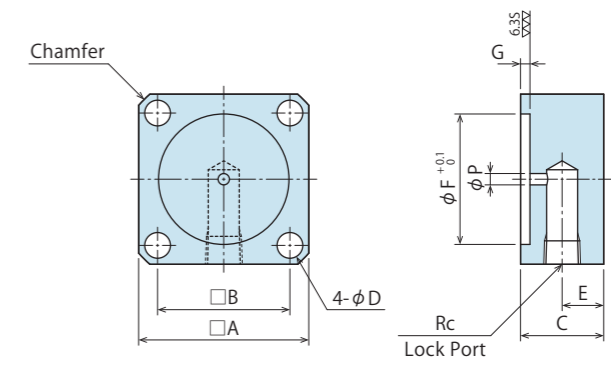


Model No.	DZ0160-C	DZ0220-C	DZ0240-C	DZ0260-C	DZ0300-C	DZ0360-C	DZ0450-C	DZ0550-C	DZ0600-C	DZ0650-C	DZ0800-C
Corresponding Model No.	DP0160 -	DP0221 DR0221 DS0221	DP0241 DR0241 DS0241	- -	DP0301 DR0301 DS0301	DP0361 DR0361 DS0361 DT0361	DP0451 DR0451 DS0451 DT0451	DP0551 DR0551 DS0551 DT0551	- -	DP0651 DR0651 DS0651 DT0651	DP0801 DR0801 DS0801 DT0801
A	25	28	32	35	38	45	55	70	75	80	90
B	18	21	23	26	29	35	42	54	59	62	72
C	12	14	14	14	15	16	18	20	22	25	25
D	4.5	4.5	5.5	5.5	5.5	6.8	9	11	11	14	14
M (Nominal×Pitch)	M16×1.5	M22×1.5	M24×1.5	M26×1.5	M30×1.5	M36×1.5	M45×1.5	M55×2	M60×2	M65×2	M80×2
Chamfer	C2	C2	C3	C3	C3	C3	C4	C5	C4	C5.5	C5.5
Weight kg	0.04	0.04	0.06	0.07	0.08	0.1	0.2	0.4	0.45	0.5	0.6

Notes: 1. Material: S45C Surface Finishing: Alkaline Blackening  
2. Mounting bolts are not provided. Prepare mounting bolts according to the mounting height using the dimension C as a reference.

Manifold Block for DP

Model No. Indication  
**DZ 036 0 - P**  
Size (Refer to following table)  
Design No. (Revision Number)

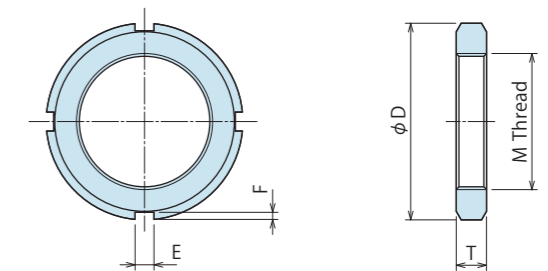


Model No.	DZ0160-P	DZ0220-P	DZ0240-P	DZ0300-P	DZ0360-P	DZ0450-P	DZ0550-P	DZ0650-P	DZ0800-P
Corresponding Model No.	DP0160	DP0221	DP0241	DP0301	DP0361	DP0451	DP0551	DP0651	DP0801
A	25	28	32	38	45	55	70	80	90
B	18	21	23	29	35	42	54	62	72
C	19	19	19	22	22	25	25	25	28
D	4.5	4.5	5.5	5.5	6.8	9	11	14	14
E	9.5	9.5	9.5	11	11	12.5	12.5	12.5	14
F	14.5	20.5	22.5	28.5	34.5	43.5	53	63	78
G	1.5	2.5	2.5	2.5	2.5	3.5	3.5	3.5	4
P	3	3	3	3	3	5	5	5	5
Rc	Rc1/8	Rc1/8	Rc1/8	Rc1/8	Rc1/8	Rc1/4	Rc1/4	Rc1/4	Rc1/4
Chamfer	C2	C2	C3	C3	C3	C4	C5	C5.5	C5.5
Weight kg	0.1	0.1	0.2	0.2	0.3	0.6	0.8	1.0	1.5

Notes: 1. Material: S45C Surface Finishing: Alkaline Blackening  
2. Mounting bolts are not provided. Prepare mounting bolts according to the mounting height using the dimension C as a reference.

Bulkhead Nut for DP/DR/DS/DT

Model No. Indication  
**DZ 036 0 - B**  
Size (Refer to following table)  
Design No. (Revision Number)



Model No.	DZ0160-B	DZ0220-B	DZ0240-B	DZ0300-B	DZ0360-B	DZ0450-B	DZ0550-B	DZ0650-B	DZ0800-B
Corresponding Model No.	DP0160 -	DP0221 DR0221 DS0221	DP0241 DR0241 DS0241	DP0301 DR0301 DS0301	DP0361 DR0361 DS0361 DT0361	DP0451 DR0451 DS0451 DT0451	DP0551 DR0551 DS0551 DT0551	DP0651 DR0651 DS0651 DT0651	DP0801 DR0801 DS0801 DT0801
D	25	32	38	45	52	65	75	85	105
E	4	5	5	5	5	6	7	7	8
F	2	2	2	2	2	2.5	3	3	3.5
M (Nominal×Pitch)	M16×1.5	M22×1.5	M24×1.5	M30×1.5	M36×1.5	M45×1.5	M55×2	M65×2	M80×2
T	5	6	7	7	8	10	11	12	15
Weight kg	0.02	0.03	0.03	0.05	0.08	0.1	0.2	0.3	0.5

Note: 1. Material: S45C Surface Finishing: Alkaline Blackening

- High-Power Series
- Pneumatic Series
- Hydraulic Series
- Valve / Coupler Hydraulic Unit
- Manual Operation Accessories
- Cautions / Others

- Screw Locator
- VXF/VXE
- Manual Expansion Locating Pin
- VX
- Manifold Block
- WHZ-MD
- LZY-MD
- LZ-MS
- LZ-MP
- TMZ-1MB
- TMZ-2MB
- DZ-M

- Manifold Block / Nut
- DZ-R
- DZ-C
- DZ-P
- DZ-B
- LZ-S
- LZ-SQ
- WNZ-SQ
- TNZ-S
- TNZ-SQ

- Pressure Switch
- JBA

- Pressure Gauge
- JGA/JGB

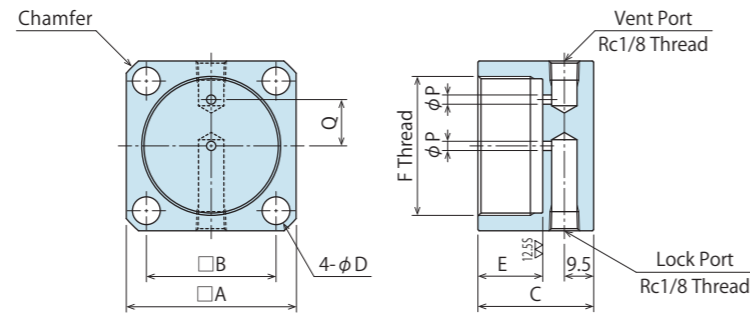
- Manifold
- JX

- Coupler Switch
- PS

- G-Thread Fitting

Manifold Block for LD/WNC

Model No. Indication  
**LZ 036 0 - S**  
Size (Refer to following table)  
Design No. (Revision Number)



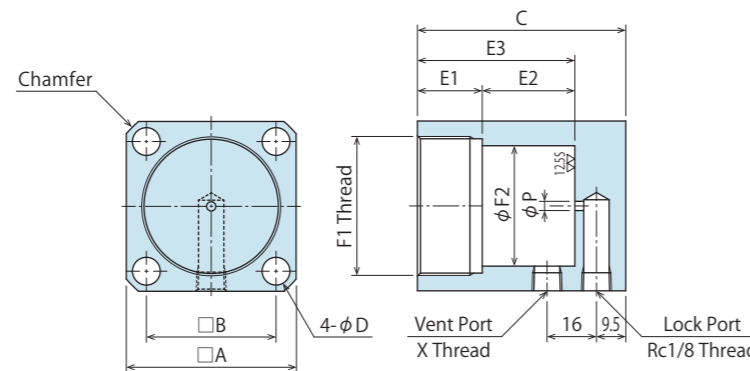
(mm)

Model No.	LZ0220-S	LZ0260-S	LZ0300-S	LZ0360-S	LZ0450-S	LZ0600-S
Corresponding Model No.	LD0222 (Except -Q)*1 WNC0350 (Except -Q)*2	LD0262 (Except -Q)*1 WNC0600 (Except -Q)*2	LD0302 (Except -Q)*1 WNC1000 (Except -Q)*2	LD0362 (Except -Q)*1 WNC1600 (Except -Q)*2	LD0452 (Except -Q)*1 WNC3000 (Except -Q)*2	- WNC6000 (Except -Q)*2
A	28	35	38	45	55	75
B	21	26	29	35	42	59
C	30.5	32.5	33.5	34.5	37.5	41.5
D	4.5	5.5	5.5	6.8	9	11
E	14	16	17	18	21	25
F (Nominal x Pitch)	M22x1.5	M26x1.5	M30x1.5	M36x1.5	M45x1.5	M60x2
P	2	2.5	3	3	3	3
Q	7	9.5	11	13	15	24
Chamfer	C2	C3	C3	C3	C4	C4
Weight kg	0.12	0.20	0.24	0.34	0.52	1.12

- Notes: 1. Material: S45C Surface Finishing: Alkaline Blackening  
 2. Mounting bolts are not provided. Prepare mounting bolts according to the mounting height using the dimension C as a reference.  
 \*1. It is not applicable for LD-Q: Work Support Hydraulic Advance Long Stroke Option. (Please select from LZ-SQ.)  
 \*2. It is not applicable for WNC-Q: High-Power Pneumatic Work Support Pneumatic Advance Long Stroke Option. (Please select from WNZ-SQ.)

Manifold Block for LD-Q

Model No. Indication  
**LZ 036 0 - SQ**  
Size (Refer to following table)  
Design No. (Revision Number)



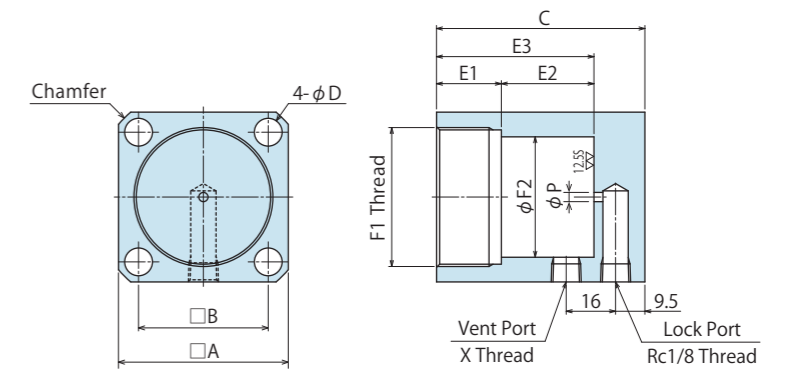
(mm)

Model No.	LZ0220-SQ	LZ0260-SQ	LZ0300-SQ	LZ0360-SQ	LZ0450-SQ
Corresponding Model No.	LD0222-Q*2	LD0262-Q*2	LD0302-Q*2	LD0362-Q*2	LD0452-Q*2
A	28	35	38	45	55
B	21	26	29	35	42
C	50	49.5	53	60.5	67.5
D	4.5	5.5	5.5	6.8	9
E1	14	16	17	18	21
E2	19.5	17	19.5	26	30
E3	33.5	33	36.5	44	51
F1 (Nominal x Pitch)	M22x1.5	M26x1.5	M30x1.5	M36x1.5	M45x1.5
F2	16	20	24	30	39
P	3	3	3	3	3
X Thread	M5x0.8	Rc1/8	Rc1/8	Rc1/8	Rc1/8
Chamfer	C2	C3	C3	C3	C4
Weight kg	0.21	0.31	0.38	0.58	0.89

- Notes: 1. Material: S45C Surface Finishing: Alkaline Blackening  
 2. Mounting bolts are not provided. Prepare mounting bolts according to the mounting height using the dimension C as a reference.  
 \*2. It is not applicable for LD-EQ: Work Support Spring Advance Long Stroke Option. (Please select from LZ-S.)

Manifold Block for WNC-Q

Model No. Indication  
**WNZ 035 0 - SQ**  
Size (Refer to following table)  
Design No. (Revision Number)



(mm)

Model No.	WNZ0350-SQ	WNZ0600-SQ	WNZ1000-SQ	WNZ1600-SQ	WNZ3000-SQ	WNZ6000-SQ
Corresponding Model No.	WNC0350-Q	WNC0600-Q	WNC1000-Q	WNC1600-Q	WNC3000-Q	WNC6000-Q
A	28	35	38	45	55	75
B	21	26	29	35	42	59
C	49	51	52	56	59	68
D	4.5	5.5	5.5	6.8	9	11
E1	14	16	17	18	21	25
E2	18.5	18.5	18.5	21.5	21.5	26.5
E3	32.5	34.5	35.5	39.5	42.5	51.5
F1 (Nominal x Pitch)	M22x1.5	M26x1.5	M30x1.5	M36x1.5	M45x1.5	M60x2
F2	16	20	24	30	39	53
P	3	3	3	3	3	3
X Thread	M5x0.8	Rc1/8	Rc1/8	Rc1/8	Rc1/8	Rc1/8
Chamfer	C2	C3	C3	C3	C4	C4
Weight kg	0.20	0.32	0.37	0.55	0.79	1.75

- Notes: 1. Material: S45C Surface Finishing: Alkaline Blackening  
 2. Mounting bolts are not provided. Prepare mounting bolts according to the mounting height using the dimension C as a reference.

- High-Power Series
- Pneumatic Series
- Hydraulic Series
- Valve / Coupler Hydraulic Unit
- Manual Operation Accessories
- Cautions / Others

Screw Locator

VXF/VXE

Manual Expansion Locating Pin

VX

Manifold Block

WHZ-MD

LZY-MD

LZ-MS

LZ-MP

TMZ-1MB

TMZ-2MB

DZ-M

Manifold Block / Nut

DZ-R

DZ-C

DZ-P

DZ-B

LZ-S

LZ-SQ

WNZ-SQ

TNZ-S

TNZ-SQ

Pressure Switch

JBA

Pressure Gauge

JGA/JGB

Manifold

JX

Coupler Switch

PS

G-Thread Fitting

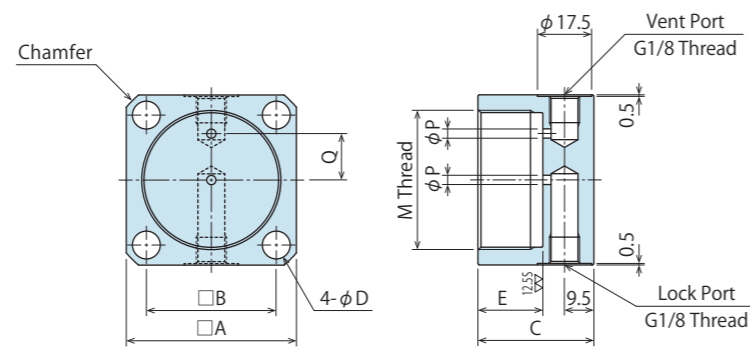
Manifold Block for TNC

Model No. Indication

**TNZ 060 0 - S**

Size  
(Refer to following table)

Design No.  
(Revision Number)



MEMO

(mm)

Model No.	TNZ0400-S	TNZ0600-S	TNZ1000-S	TNZ1600-S
Corresponding Model No.	TNC0400 (Except -Q) <sup>※3</sup>	TNC0600 (Except -Q) <sup>※3</sup>	TNC1000 (Except -Q) <sup>※3</sup>	TNC1600 (Except -Q) <sup>※3</sup>
A	35	38	45	55
B	26	29	35	42
C	32.5	33.5	34.5	37.5
D	5.5	5.5	6.8	9
E	16	17	18	21
M (Nominal×Pitch)	M26×1.5	M30×1.5	M36×1.5	M45×1.5
P	2.5	3	3	3
Q	9.5	11	13	15
Chamfer	C3	C3	C3	C4
Weight kg	0.20	0.23	0.34	0.52

- Notes: 1. Material: S45C Surface Finishing: Alkaline Blackening  
 2. Mounting bolts are not provided. Prepare mounting bolts according to the mounting height using the dimension C as a reference.  
 ※3. It is not applicable for TNC-Q: Work Support Hydraulic Advance Long Stroke Option. (Please select from TNC-SQ.)

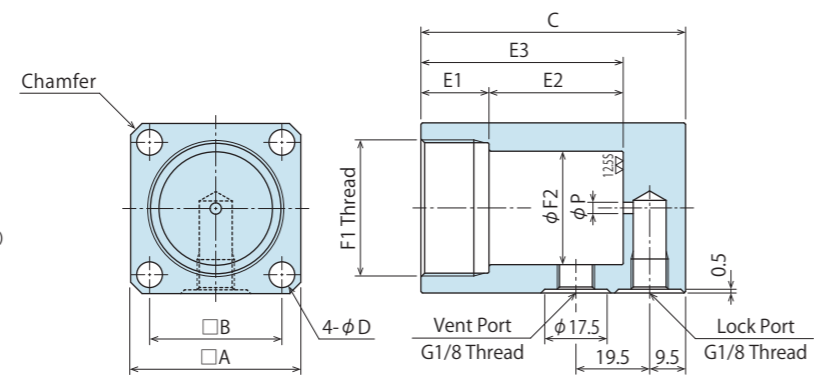
Manifold Block for TNC-Q

Model No. Indication

**TNZ 060 0 - SQ**

Size  
(Refer to following table)

Design No.  
(Revision Number)



(mm)

Model No.	TNZ0400-SQ	TNZ0600-SQ	TNZ1000-SQ	TNZ1600-SQ
Corresponding Model No.	TNC0400-Q	TNC0600-Q	TNC1000-Q	TNC1600-Q
A	35	38	45	55
B	26	29	35	42
C	56	63.5	70	86.5
D	5.5	5.5	6.8	9
E1	16	17	18	21
E2	23.5	30	35.5	49
E3	39.5	47	53.5	70
F1 (Nominal×Pitch)	M26×1.5	M30×1.5	M36×1.5	M45×1.5
F2	20	24	30	39
P	2.5	3	3	3
Chamfer	C3	C3	C3	C4
Weight kg	0.36	0.46	0.68	1.16

- Notes: 1. Material: S45C Surface Finishing: Alkaline Blackening  
 2. Mounting bolts are not provided. Prepare mounting bolts according to the mounting height using the dimension C as a reference.

- High-Power Series
- Pneumatic Series
- Hydraulic Series
- Valve / Coupler Hydraulic Unit
- Manual Operation Accessories
- Cautions / Others

Screw Locator

VXF/VXE

Manual Expansion Locating Pin

VX

Manifold Block

WHZ-MD

LZY-MD

LZ-MS

LZ-MP

TMZ-1MB

TMZ-2MB

DZ-M

Manifold Block / Nut

DZ-R

DZ-C

DZ-P

DZ-B

LZ-S

LZ-SQ

WNZ-SQ

TNZ-S

TNZ-SQ

Pressure Switch

JBA

Pressure Gauge

JGA/JGB

Manifold

JX

Coupler Switch

PS

G-Thread Fitting

● Cautions

● Installation Notes (For Hydraulic Series)

- 1) Check the Usable Fluid
  - Please use the appropriate fluid by referring to the Hydraulic Fluid List.
- 2) Procedure before Piping
  - The pipeline, piping connector and fixture circuits should be cleaned by thorough flushing.
  - The dust and cutting chips in the circuit may lead to fluid leakage and malfunction.
  - There is no filter provided with Kosmek's product except for a part of valves which prevents foreign materials and contaminants from getting into the circuit.

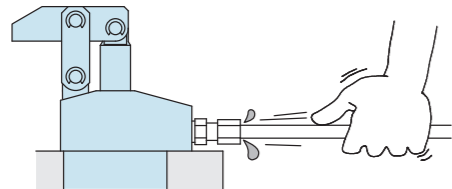
3) Applying Sealing Tape

- Wrap with tape 1 to 2 times following the screw direction.
- Pieces of the sealing tape can lead to oil leakage and malfunction.
- Please implement piping construction in a clear environment to prevent anything getting in products.

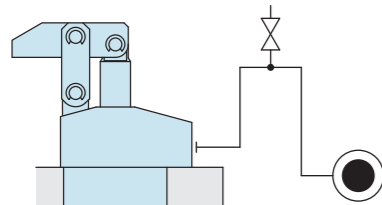
4) Air Bleeding of the Hydraulic Circuit

- If the hydraulic circuit has excessive air, the action time may become very long. If air enters the circuit after connecting the hydraulic port or under the condition of no air in the oil tank, please perform the following steps.

- ① Reduce hydraulic pressure to less than 2MPa.
- ② Loosen the cap nut of pipe fitting closest to the clamp by one full turn.
- ③ Shake the pipeline to loosen the outlet of pipe fitting.  
Hydraulic fluid mixed with air comes out.



- ④ Tighten the cap nut after bleeding.
- ⑤ It is more effective to release air at the highest point inside the circuit or at the end of the circuit.  
(Set an air bleeding valve at the highest point inside the circuit.)



5) Checking Looseness and Retightening

- At the beginning of the machine installation, the bolt and nut may be tightened lightly. Check the looseness and re-tighten as required.

● Hydraulic Fluid List

Maker	ISO Viscosity Grade ISO-VG-32	
	Anti-Wear Hydraulic Oil	Multi-Purpose Hydraulic Oil
Showa Shell Sekiyu	Tellus S2 M 32	Morlina S2 B 32
Idemitsu Kosan	Daphne Hydraulic Fluid 32	Daphne Super Multi Oil 32
JX Nippon Oil & Energy	Super Hyrando 32	Super Mulpus DX 32
Cosmo Oil	Cosmo Hydro AW32	Cosmo New Mighty Super 32
ExxonMobil	Mobil DTE 24	Mobil DTE 24 Light
Matsumura Oil	Hydol AW-32	
Castrol	Hyspin AWS 32	

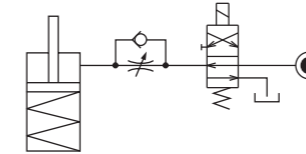
Note : Please contact manufacturers when customers require products in the list above.

● Notes on Hydraulic Cylinder Speed Control Unit

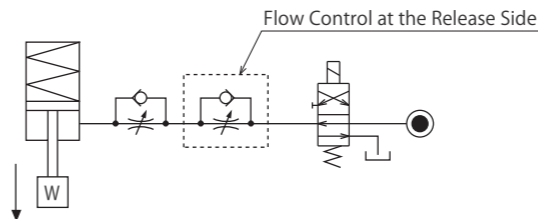
⚠ Please pay attention to the cautions below. Design the hydraulic circuit for controlling the action speed of hydraulic cylinder. Improper circuit design may lead to malfunctions and damages. Please review the circuit design in advance.

● Flow Control Circuit for Single Acting Cylinder

For spring return single acting cylinders, restricting flow during release can extremely slow down or disrupt release action. The preferred method is to control the flow during the lock action using a valve that has free-flow in the release direction. It is also preferred to provide a flow control valve at each actuator.



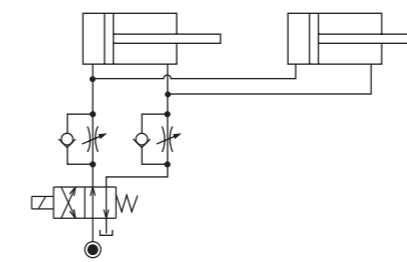
Accelerated clamping speed by excessive hydraulic flow to the cylinder may sustain damage. In this case add flow control to regulate flow. (Please add flow control to release flow if the lever weight is put on at the time of release action when using swing clamps.)



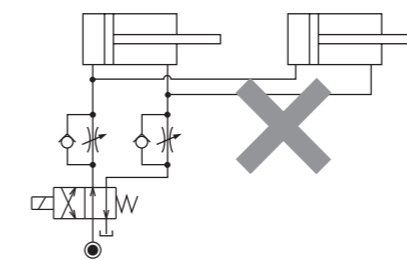
● Flow Control Circuit for Double Acting Cylinder

Flow control circuit for double acting cylinder should have meter-out circuits for both the lock and release sides. Meter-in control can have adverse effect by presence of air in the system. However, in the case of controlling LKE, TMA, TLA, both lock side and release side should be meter-in circuit. Refer to P.75 for speed adjustment of LKE. For TMA and TLA, if meter-out circuit is used, abnormal high pressure is created, which causes oil leakage and damage.

【Meter-out Circuit】 (Except LKE/TMA/TLA)

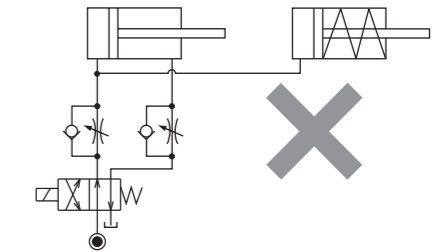


【Meter-in Circuit】 (LKE/TMA/TLA must be controlled with meter-in.)

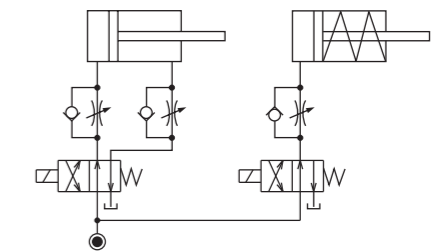


In the case of meter-out circuit, the hydraulic circuit should be designed with the following points.

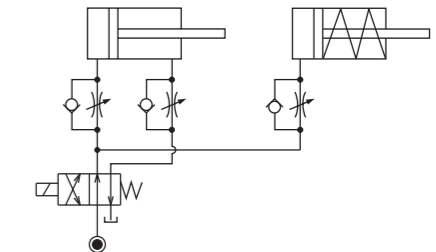
- ① Single acting components should not be used in the same flow control circuit as the double acting components. The release action of the single acting cylinders may become erratic or very slow.



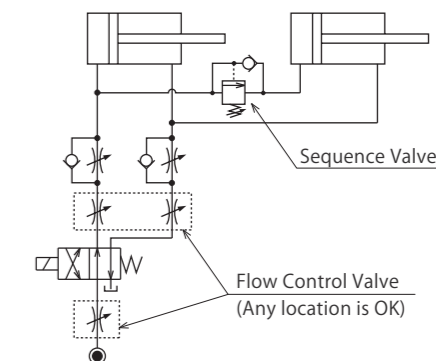
Refer to the following circuit when both the single acting cylinder and double acting cylinder are used together.  
○ Separate the control circuit.



- Reduce the influence of double acting cylinder control unit. However, due to the back pressure in tank line, single action cylinder is activated after double action cylinder works.



- ② In the case of meter-out circuit, the inner circuit pressure may increase during the cylinder action because of the fluid supply. The increase of the inner circuit pressure can be prevented by reducing the supplied fluid beforehand via the flow control valve. Especially when using sequence valve or pressure switches for clamping detection. If the back pressure is more than the set pressure then the system will not work as it is designed to.



High-Power Series  
Pneumatic Series  
Hydraulic Series  
Valve / Coupler Hydraulic Unit  
Manual Operation Accessories  
Cautions / Others

Cautions  
Installation Notes (For Hydraulic Series)  
Hydraulic Fluid List  
Notes on Hydraulic Cylinder Speed Control Circuit  
Notes on Handling  
Maintenance/Inspection  
Warranty

Company Profile  
Company Profile  
Our Products  
History

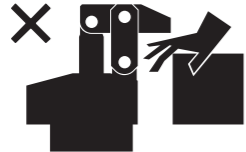
Index  
Search by Alphabetical Order

Sales Offices

**Cautions**

● Notes on Handling

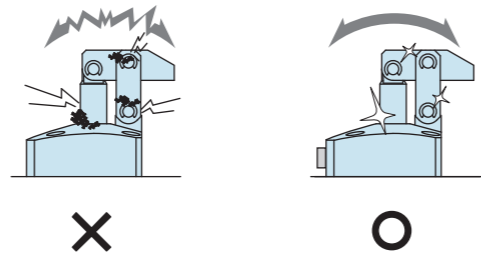
- 1) It should be operated by qualified personnel.
  - The hydraulic machine and air compressor should be operated and maintained by qualified personnel.
- 2) Do not operate or remove the product unless the safety protocols are ensured.
  - ① The machine and equipment can only be inspected or prepared when it is confirmed that the safety devices are in place.
  - ② Before the product is removed, make sure that the above-mentioned safety devices are in place. Shut off the pressure and power source, and make sure no pressure exists in the air and hydraulic circuits.
  - ③ After stopping the product, do not remove until the temperature drops.
  - ④ Make sure there is no abnormality in the bolts and respective parts before restarting the machine or equipment.
- 3) Do not touch a clamp (cylinder) while it is working. Otherwise, your hands may be injured due to clinching.



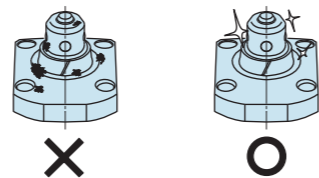
- 4) Do not disassemble or modify.
  - If the equipment is taken apart or modified, the warranty will be voided even within the warranty period.

● Maintenance and Inspection

- 1) Removal of the Machine and Shut-off of Pressure Source
  - Before the machine is removed, make sure that safety devices and preventive devices are in place. Shut off the pressure and power source, and make sure no pressure exists in the air and hydraulic circuits.
  - Make sure there is no abnormality in the bolts and respective parts before restarting.
- 2) Regularly clean the area around the piston rod and plunger.
  - If it is used when the surface is contaminated with dirt, it may lead to packing seal damage, malfunctioning and fluid leakage.



- 3) Please clean out the reference surfaces on a regular basis (taper reference surface and seating surface) of the locating products. (VS/VT/VFL/VFM/VFJ/VFK/WVS/VWM/VWK/VX/VXE/VXF)
  - The locating products, except VX/VXE/VXF model, can remove contaminants with cleaning functions. However, hardened cutting chips, adhesive coolant and others may not be removed. Make sure there are no contaminants before installing a workpiece/pallet.
  - Continuous use with contaminant on components will lead to locating accuracy failure, malfunction and fluid leakage.



- 4) If disconnecting by couplers, air bleeding should be carried out on a regular basis to avoid air mixed in the circuit.
- 5) Regularly tighten nut, bolt, pin, cylinder, pipe line and others to ensure proper use.
- 6) Make sure the hydraulic fluid has not deteriorated.
- 7) Make sure there is a smooth action without an irregular noise.
  - Especially when it is restarted after left unused for a long period, make sure it can be operated correctly.
- 8) The products should be stored in the cool and dark place without direct sunshine or moisture.
- 9) Please contact us for overhaul and repair.

● Warranty

- 1) Warranty Period
  - The product warranty period is 18 months from shipment from our factory or 12 months from initial use, whichever is earlier.
- 2) Warranty Scope
  - If the product is damaged or malfunctions during the warranty period due to faulty design, materials or workmanship, we will replace or repair the defective part at our expense. Defects or failures caused by the following are not covered.
    - ① If the stipulated maintenance and inspection are not carried out.
    - ② If the product is used while it is not suitable for use based on the operator's judgment, resulting in defect.
    - ③ If it is used or operated in an inappropriate way by the operator. (Including damage caused by the misconduct of the third party.)
    - ④ If the defect is caused by reasons other than our responsibility.
    - ⑤ If repair or modifications are carried out by anyone other than Kosmek, or without our approval and confirmation, it will void warranty.
    - ⑥ Other caused by natural disasters or calamities not attributable to our company.
    - ⑦ Parts or replacement expenses due to parts consumption and deterioration. (Such as rubber, plastic, seal material and some electric components.)

Damages excluding from direct result of a product defect shall be excluded from the warranty.

- High-Power Series
- Pneumatic Series
- Hydraulic Series
- Valve / Coupler Hydraulic Unit
- Manual Operation Accessories
- Cautions / Others

- Cautions
- Installation Notes (For Hydraulic Series)
- Hydraulic Fluid List
- Notes on Hydraulic Cylinder Speed Control Circuit
- Notes on Handling
- Maintenance/Inspection
- Warranty

- Company Profile
- Company Profile
- Our Products
- History

- Index
- Search by Alphabetical Order

- Sales Offices



WAHLTEC GmbH  
 T: +49 (7584) 9238883  
 F: +49 (7584) 9238887  
 kosmek@wahltec.de  
 www.wahltec.de